

**LEGEND**

- M** MUSTER POINT LOCATION
- EVACUATION ROUTE

**Whitehorse Rapids Muster Point Locations**

Muster points have been identified around the Whitehorse site - at the following locations:

**Millennium Trail Access Gate**

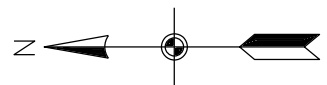
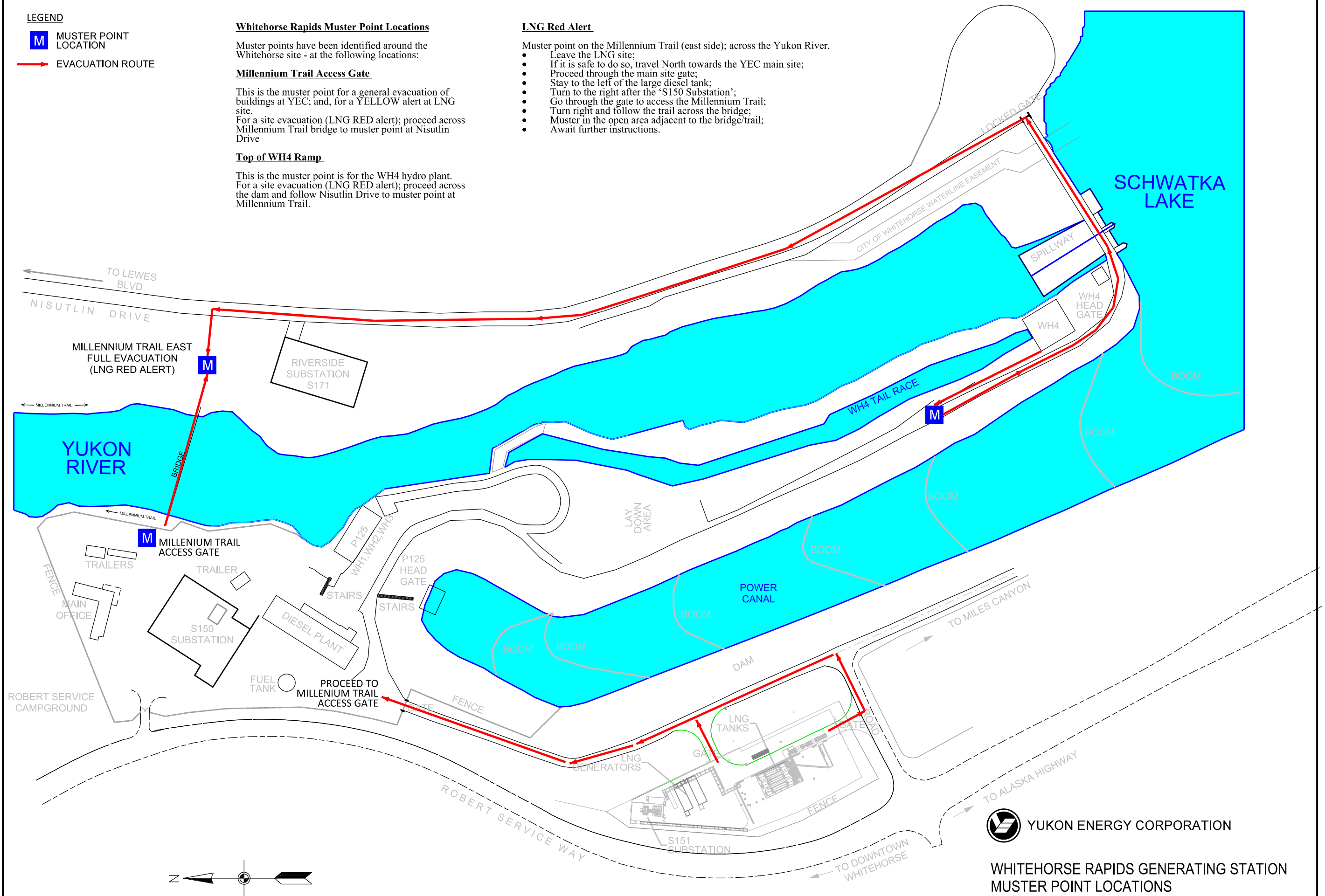
This is the muster point for a general evacuation of buildings at YEC; and, for a YELLOW alert at LNG site.  
For a site evacuation (LNG RED alert); proceed across Millennium Trail bridge to muster point at Nisutlin Drive

**Top of WH4 Ramp**

This is the muster point for the WH4 hydro plant.  
For a site evacuation (LNG RED alert); proceed across the dam and follow Nisutlin Drive to muster point at Millennium Trail.

**LNG Red Alert**

- Muster point on the Millennium Trail (east side); across the Yukon River.
- Leave the LNG site;
- If it is safe to do so, travel North towards the YEC main site;
- Proceed through the main site gate;
- Stay to the left of the large diesel tank;
- Turn to the right after the 'S150 Substation';
- Go through the gate to access the Millennium Trail;
- Turn right and follow the trail across the bridge;
- Muster in the open area adjacent to the bridge/trail;
- Await further instructions.



 YUKON ENERGY CORPORATION

**WHITEHORSE RAPIDS GENERATING STATION  
MUSTER POINT LOCATIONS**